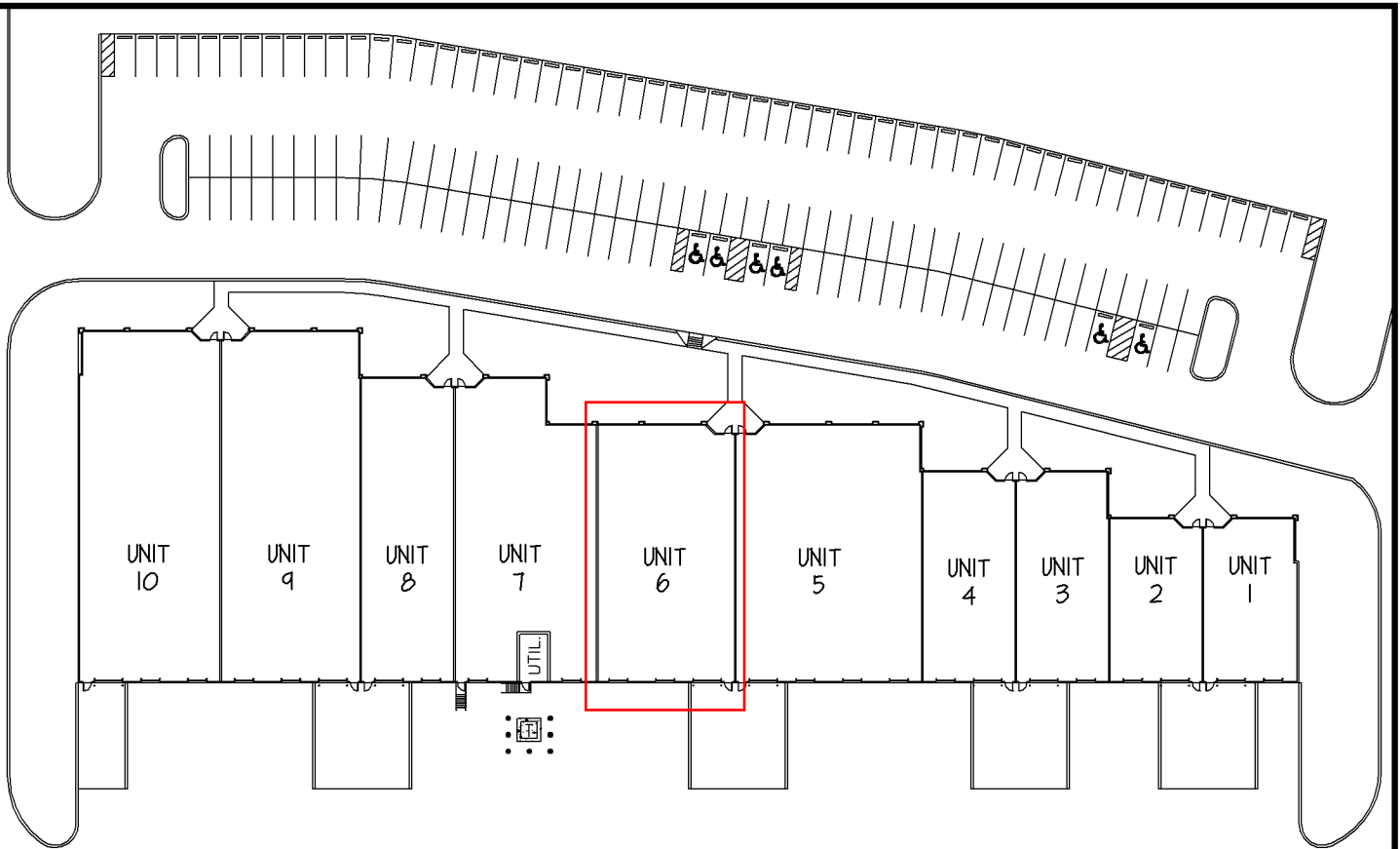


140 Mount Holly Bypass Lumberton, NJ



**One Underwood Court, P.O. Box 1605
Delran, New Jersey 08075-0117
(856) 764-2600
E-mail: leasing@whitesellco.com**



FEATURES:

- 59,291 SQ. FT. TOTAL
- ELECTRICAL SERVICE:
 - 480/277 VOLTS; 3 PHASE; 2,500 AMPS
 - 208/120 VOLTS
- MECHANICAL SERVICE:
 - GAS HEAT
 - OFFICE AIR CONDITIONED
- TYPICAL STRUCTURAL BAY:
 - 40'-0" x 40'-0"
- CLEAR HEIGHT: VARIES BY UNIT
- (16) 8'-0" x 10'-0" DOCK DOORS
- (9) 12'-0" x 12'-0" DRIVE-IN DOORS
- PUBLIC WATER & SEWER
- 150 PARKING SPACES
- ZONING: I-2 (PLANNED INDUSTRIAL)

UNIT AREAS:

- UNIT 1 - 2,890 S.F.
- UNIT 2 - 2,845 S.F.
- UNIT 3 - 3,642 S.F.
- UNIT 4 - 3,649 S.F.
- UNIT 5 - 8,901 S.F.
- UNIT 6 - 6,799 S.F.
- UNIT 7 - 6,998 S.F.
- UNIT 8 - 5,259 S.F.
- UNIT 9 - 9,087 S.F.
- UNIT 10 - 9,221 S.F.



Whitesell

One Underwood Court, Delran, New Jersey 08075
 Phone: (856) 764-2600 Web: www.whitesellco.com

UNIT No.

SITE

DATE:

03/16/15

SCALE:

1" = 80'

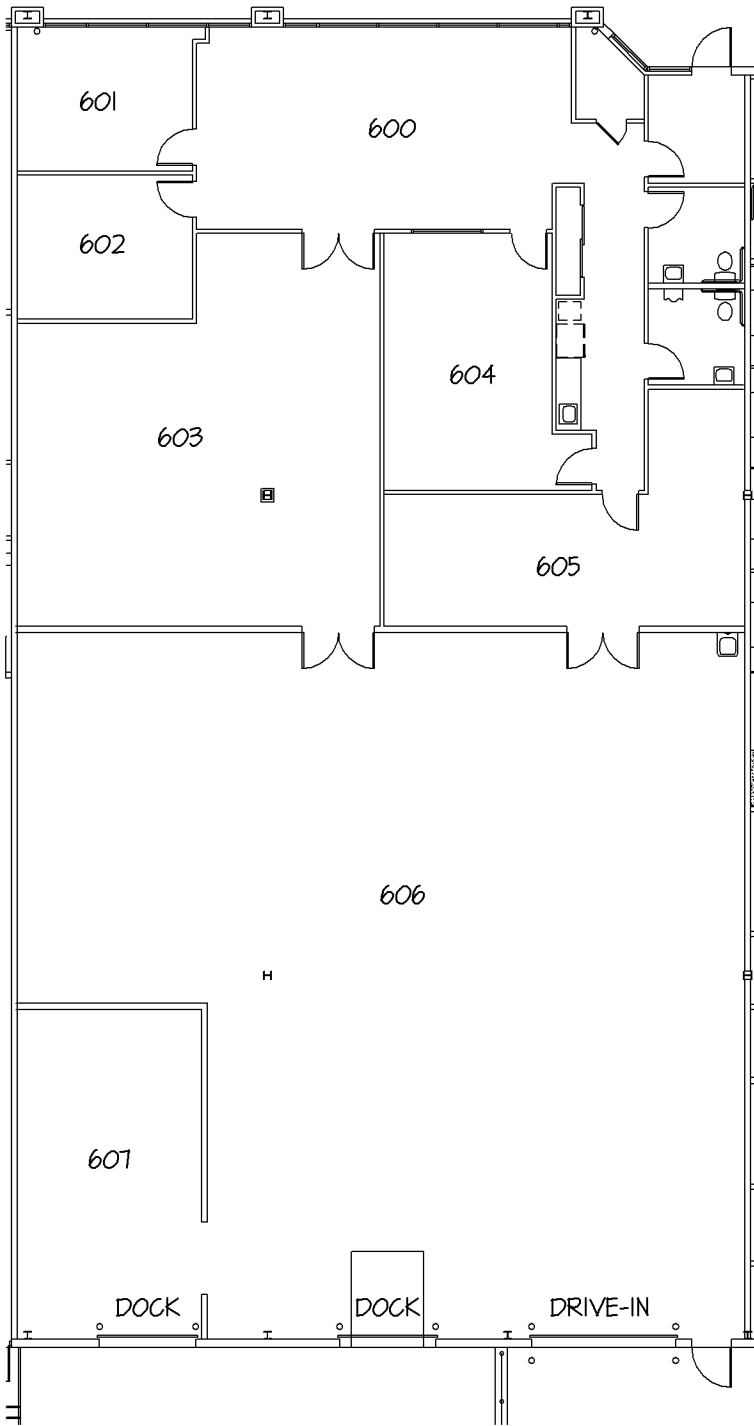
**140 MT. HOLLY BY-PASS
 LUMBERTON, NEW JERSEY**

FEATURES:

- 6,199 SQ. FT. TOTAL
 - OFFICE: 3,080 SQ. FT.
 - WAREHOUSE: 3,719 SQ. FT.
- ELECTRICAL SERVICE:
 - 227/480 VOLTS;
 - 3 PHASE; 200 AMPS
 - 208/120 VOLTS
- MECHANICAL:
 - GAS HEAT
 - OFFICE AIR CONDITIONED
- TYPICAL STRUCTURAL BAY:
 - 40'-0" x 40'-0"
- (2) 8'-0" x 10'-0" DOCK DOORS
- (1) 10'-0" x 12'-0" DRIVE-IN DOORS
- CLEARANCE HEIGHT:
 - MAX. = 21'-8"
 - MIN. = 19'-0"

APPROX. ROOM SIZES:

- 600 - 31'-3" x 16'-10"
- 601 - 14'-7" x 12'-0"
- 602 - 14'-7" x 12'-0"
- 603 - 30'-3" x 32'-9"
- 604 - 14'-0" x 21'-5"
- 605 - 30'-0" x 19'-9"
- 606 - 60'-7" x 58'-11"
- 607 - 15'-4" x 27'-6"



Whitesell Construction Co. Inc.

One Underwood Court
Delran, New Jersey 08075
(856) 764-2600

UNIT No.

6

DATE:

10/14/15

SCALE:

1/16" = 1'-0"

**140 MT. HOLLY BY-PASS
LUMBERTON, NEW JERSEY**