

FEATURES:

- 32,120 SQ. FT. TOTAL
- 55 PARKING SPACES
- BUILDING ELECTRICAL SERVICE:
 - PRIMARY: 277/480 VOLTS-3 PH-800 AMPS
 - SECONDARY: 120/208 VOLTS-3 PH
- MECHANICAL SERVICE:
 - GAS HEAT
 - OFFICE AIR CONDITIONED
- PUBLIC WATER & SEWER
- TYPICAL STRUCTURAL BAY:
 - 40'-0" x 37'-0"
- CLEAR HEIGHT: - 19'-11 1/2"
- (7) 8'-0" x 9'-0" DOCK DOORS
- (1) 10'-0" x 12'-0" DOCK DOOR
- (1) 10'-0" x 14'-0" DRIVE-IN DOOR AT RAMP
- (1) 12'-0" x 14'-0" DRIVE-IN DOOR AT RAMP
- ZONING: P-1 (PLANNED INDUSTRIAL)

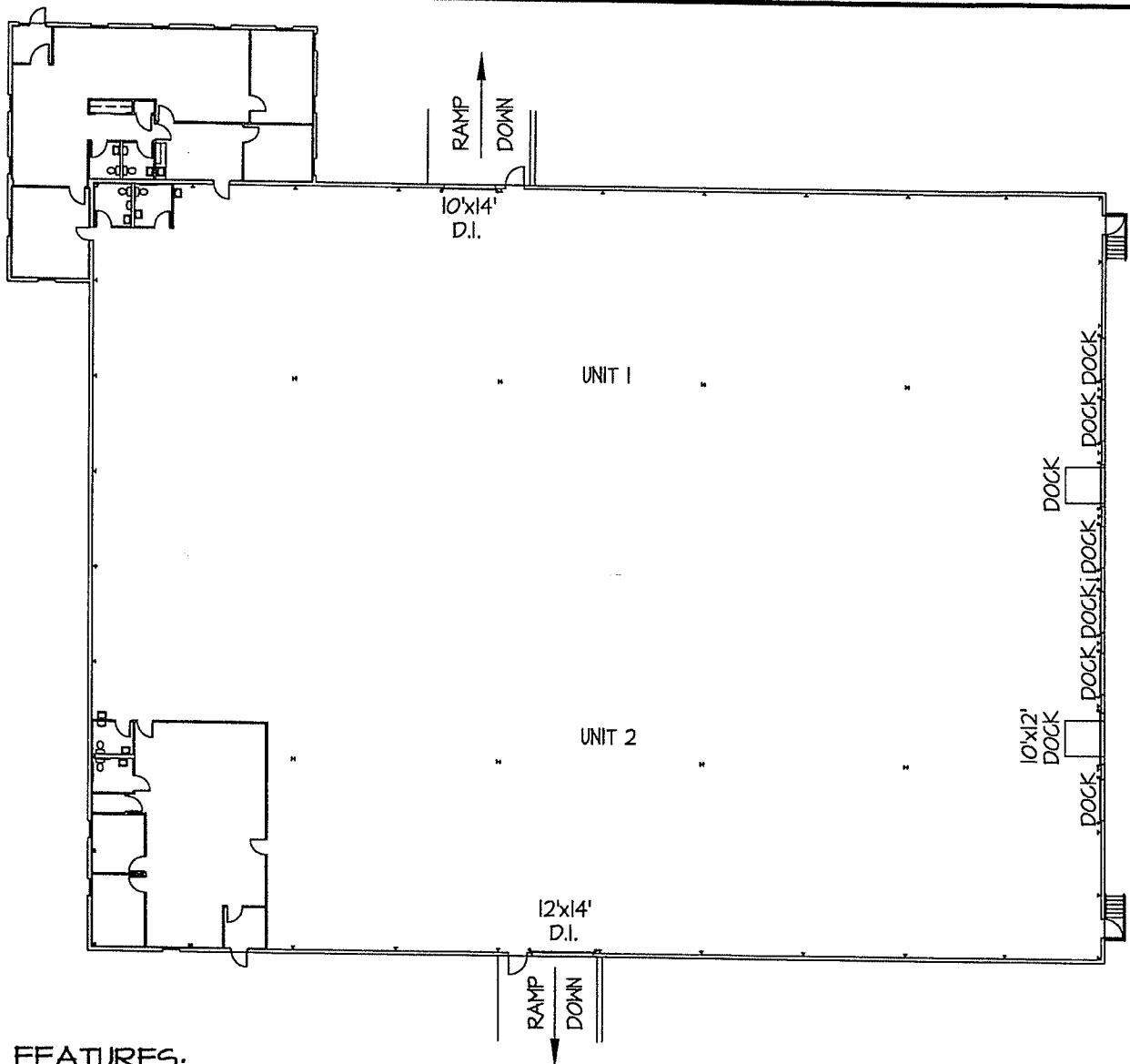


Whitesell

One Underwood Court, Delran, New Jersey 08075
 Phone: (856) 764-2600 Web: www.whitesellco.com

UNIT No.	DATE:	SCALE:
SITE	02/19/13	1" = 50'

200 RITTENHOUSE CIRCLE SOUTH
 BRISTOL, PA.



FEATURES:

- 32,120 SQ. FT. TOTAL
 - OFFICE: 3,620 SQ. FT. TOTAL
 - UNIT 1: 17,120 SQ. FT./OFFICE: 2,120 SQ. FT.
 - UNIT 2: 15,000 SQ. FT./OFFICE: 1,500 SQ. FT.
- BUILDING ELECTRICAL SERVICE:
 - PRIMARY: 277/480 VOLTS-3 PH-800 AMPS
 - SECONDARY: 120/208 VOLTS-3 PH
- MECHANICAL SERVICE:
 - GAS HEAT
 - OFFICE AIR CONDITIONED
- TYPICAL STRUCTURAL BAY:
 - 40'-0" x 37'-0"
- CLEAR HEIGHT: - 19'-11 1/2"
- (7) 8'-0" x 9'-0" DOCK DOORS
- (1) 10'-0" x 12'-0" DOCK DOOR
- (1) 10'-0" x 14'-0" DRIVE-IN DOOR
- (1) 12'-0" x 14'-0" DRIVE-IN DOOR



Whitesell

One Underwood Court, Delran, New Jersey 08075
 Phone: (856) 764-2600 Web: www.whitesellco.com

UNIT No.

OVERALL

DATE:

10/24/18

SCALE:

N.T.S.

200 RITTENHOUSE SOUTH
 BRISTOL, PENNSYLVANIA